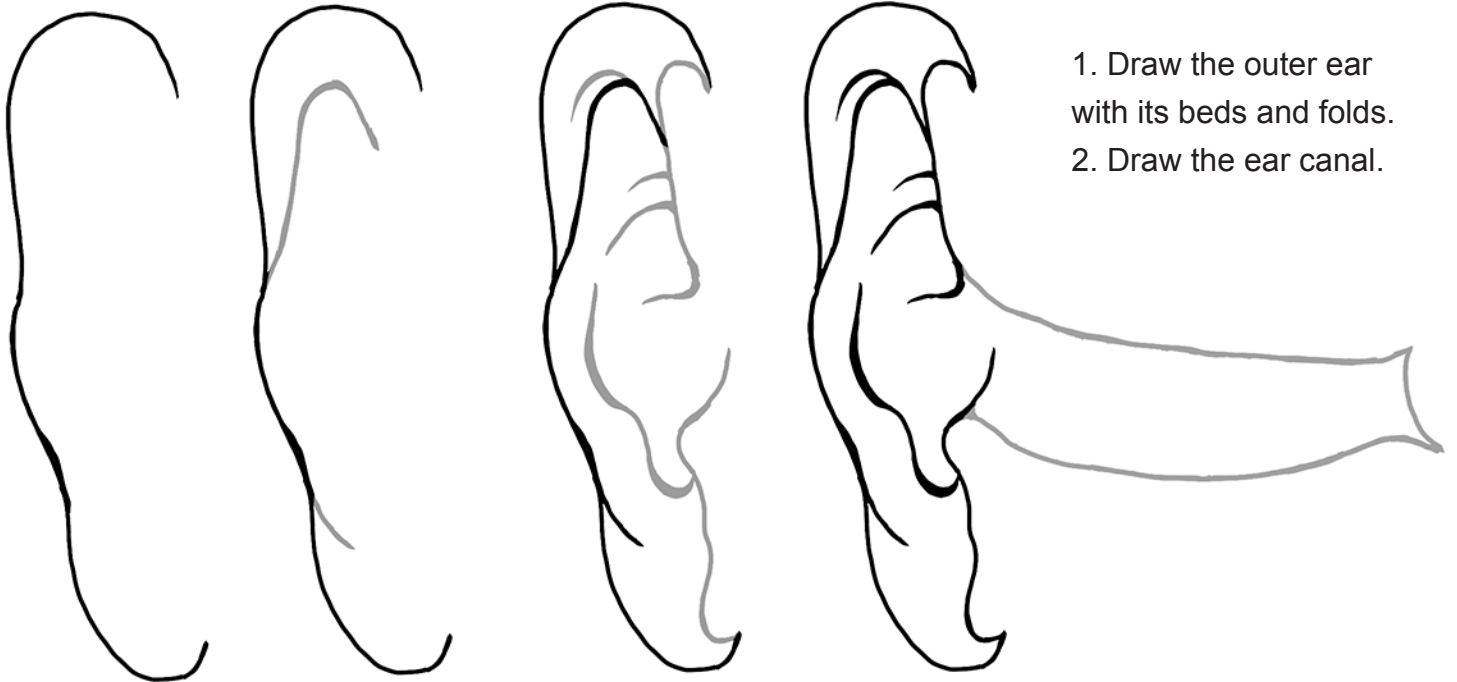
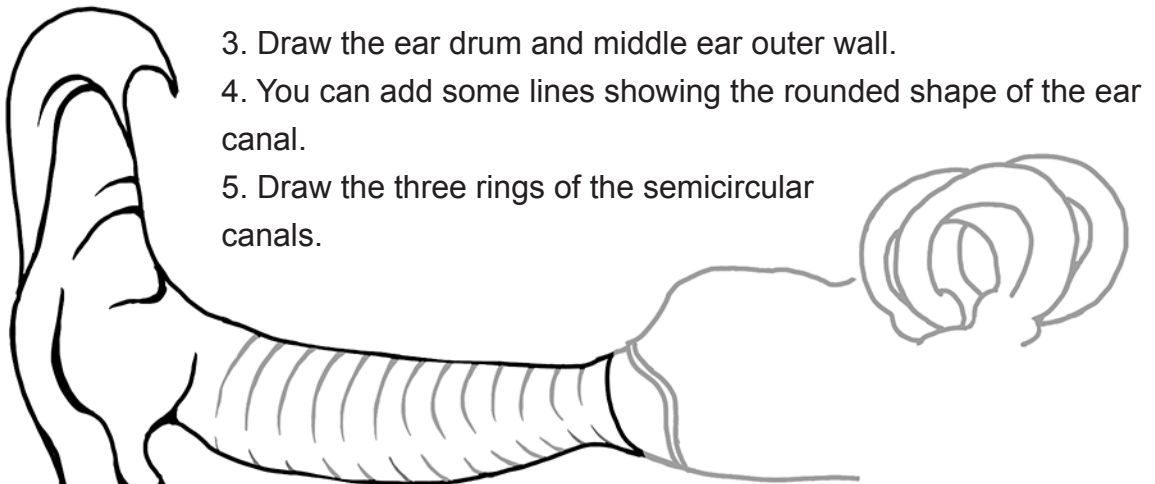


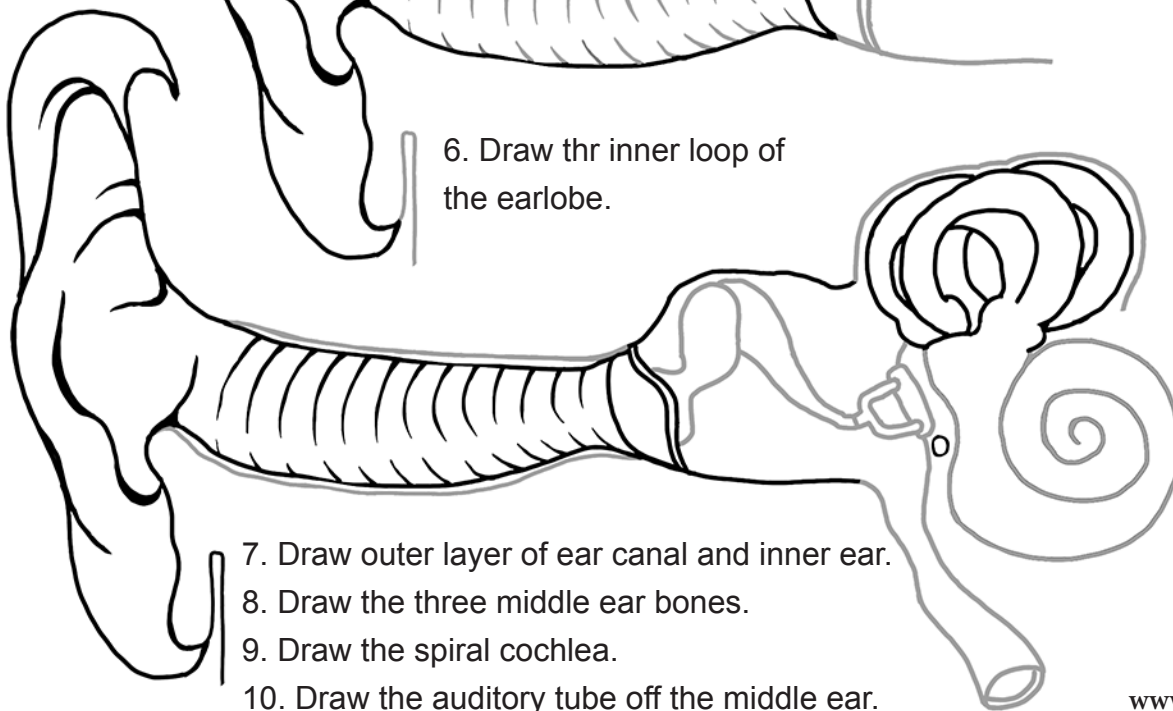
Draw the Anatomy of the Ear



1. Draw the outer ear with its beds and folds.
2. Draw the ear canal.



3. Draw the ear drum and middle ear outer wall.
4. You can add some lines showing the rounded shape of the ear canal.
5. Draw the three rings of the semicircular canals.



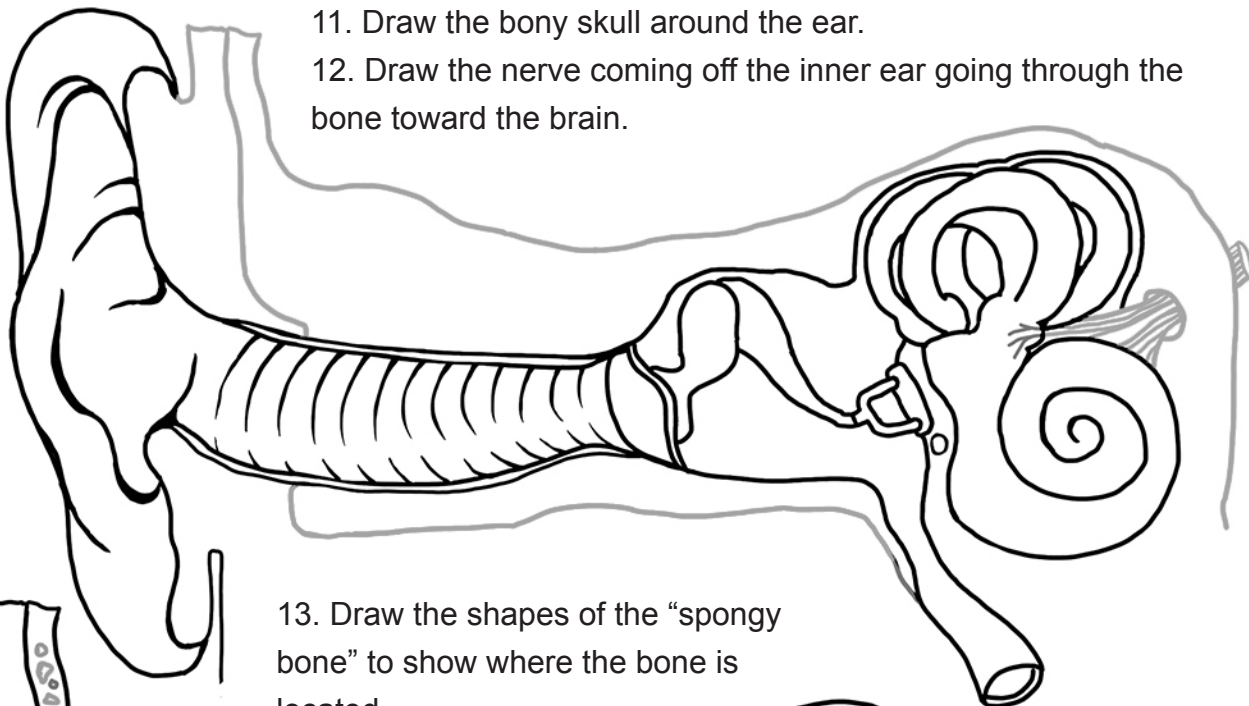
6. Draw the inner loop of the earlobe.

7. Draw outer layer of ear canal and inner ear.
8. Draw the three middle ear bones.
9. Draw the spiral cochlea.
10. Draw the auditory tube off the middle ear.

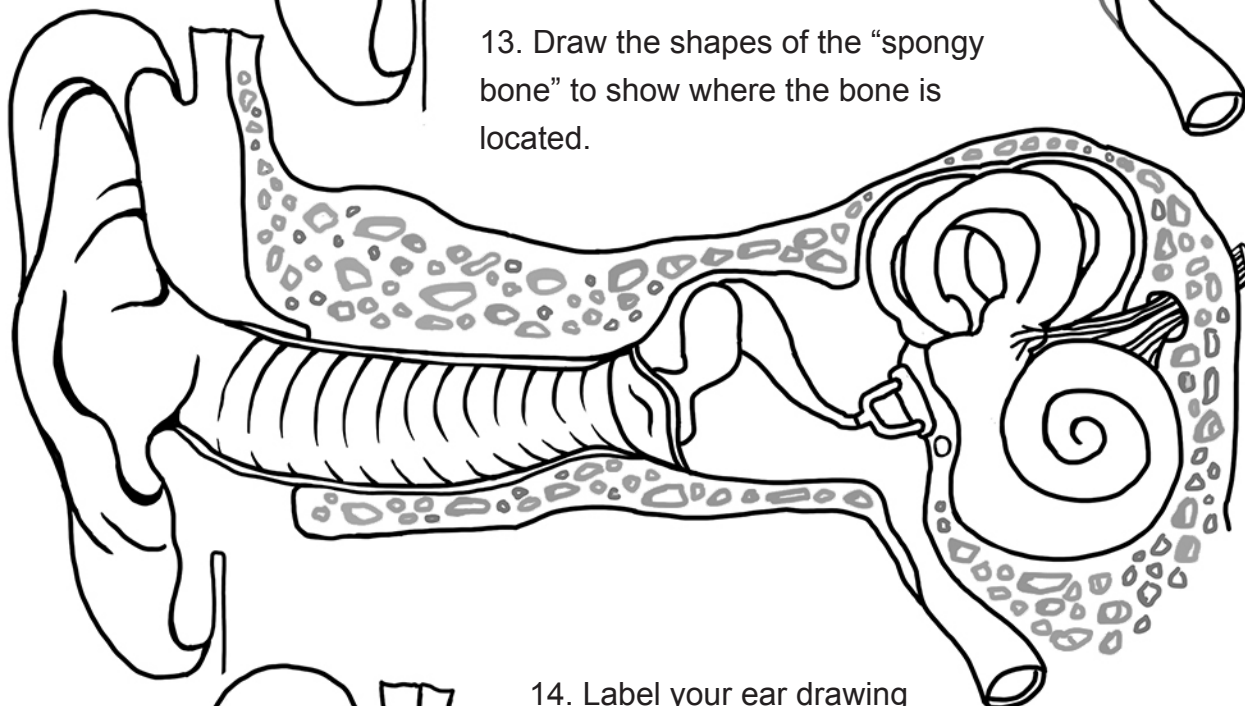
**Draw the
Anatomy
of the Ear**
(continued...)

11. Draw the bony skull around the ear.

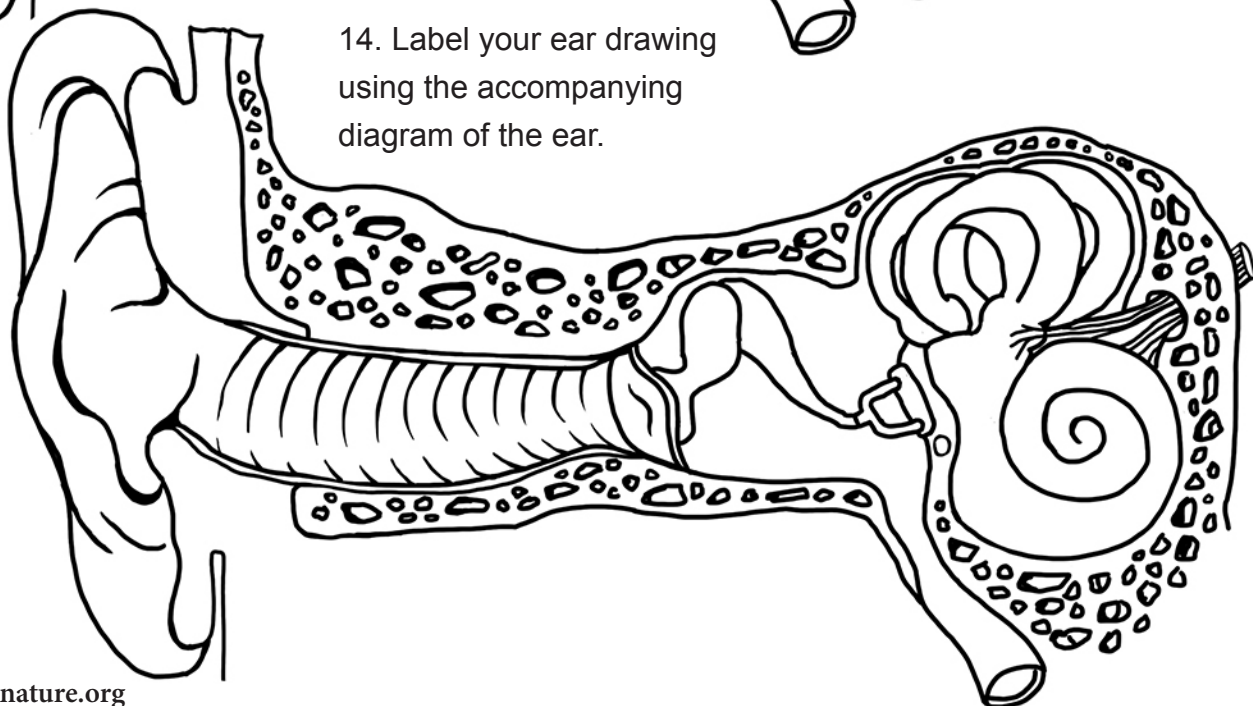
12. Draw the nerve coming off the inner ear going through the bone toward the brain.



13. Draw the shapes of the “spongy bone” to show where the bone is located.



14. Label your ear drawing using the accompanying diagram of the ear.



Structures of the Ear

