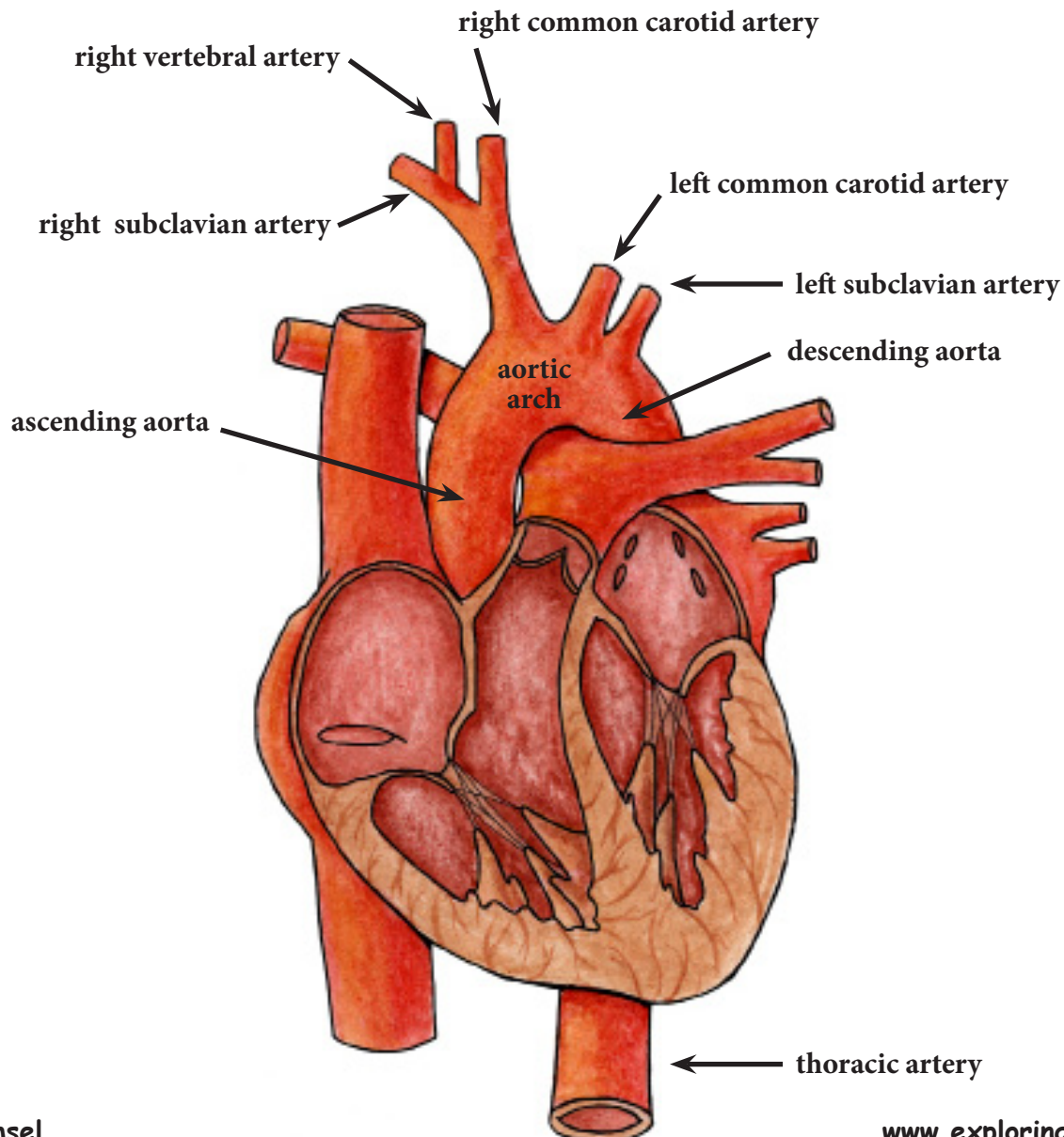
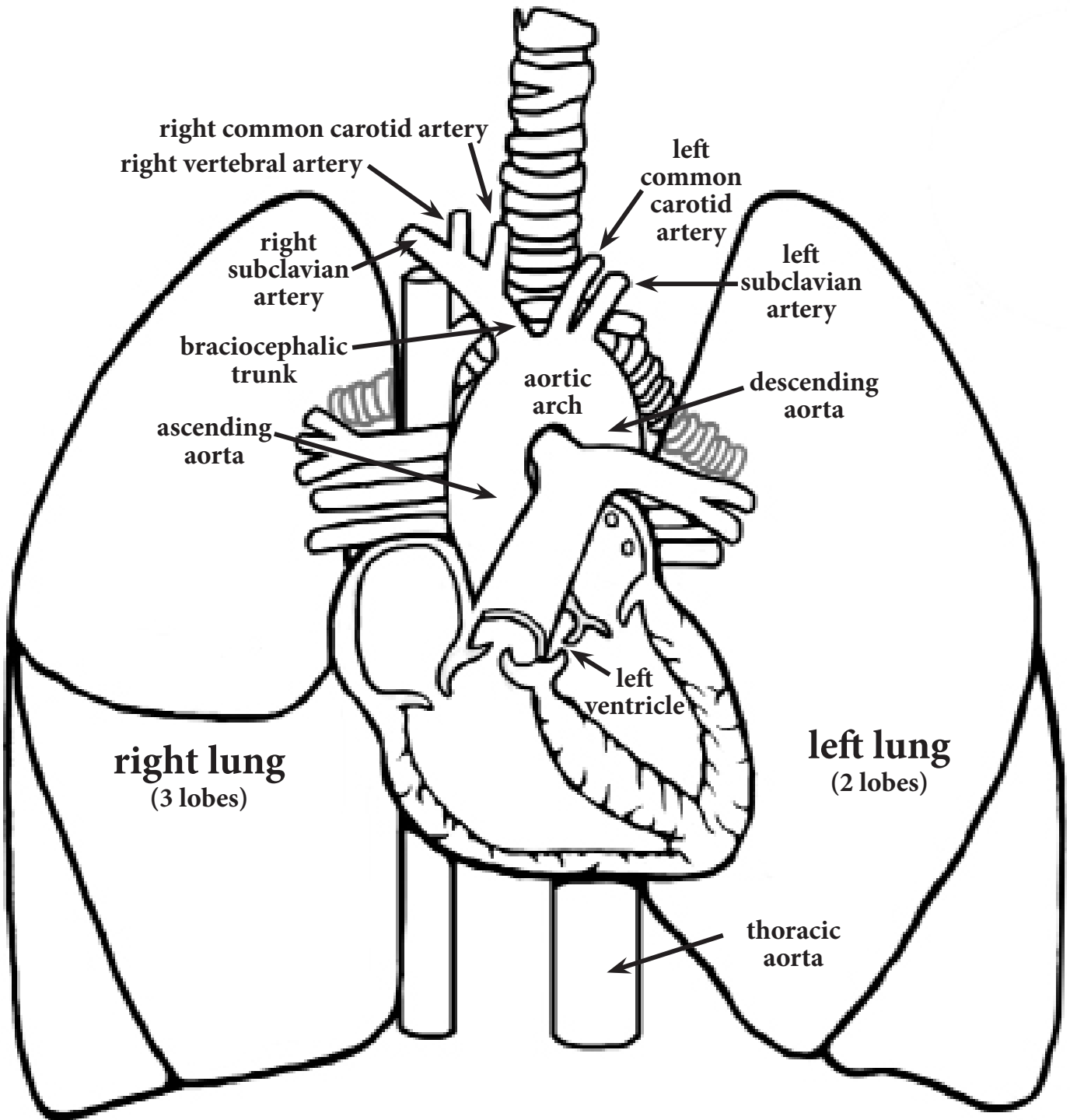


Circulatory Pathways - Systemic Circulation

- **Function:** Brings oxygenated blood supply to all the body's tissues, delivers nutrients from digestive tract to tissues and carried away CO₂ and metabolic waste.
- **Oxygen Rich Blood Flow:** Oxygen rich blood is pumped from the heart:
 - > **left ventricle** through the **semilunar valve*** into the **ascending aorta**>
 - *Opposite each semilunar valve cusp is an **aortic sinus** which contains **pressoreceptors** involved in blood pressure regulation. The semilunar valve prevents the back flow of blood back into the heart.
 - > **ascending aorta** arches up (in front of pulmonary trunk) and gives off **right and left coronary arteries**>
 - > **ascending aorta** becomes the **aortic arch**>
 - > **aortic arch** gives off the **brachiocephalic trunk** (under right clavicle)>
 - > the **brachiocephalic trunk** branches into **right common carotid artery** and **right subclavian artery**.
 - > Next **aortic arch** gives off the **left common carotid artery** and the **right subclavian artery**>
 - > **aortic arch** becomes the **descending aorta**>



Circulatory Pathways - Systemic Circulation



Arteries of the Circulatory System

