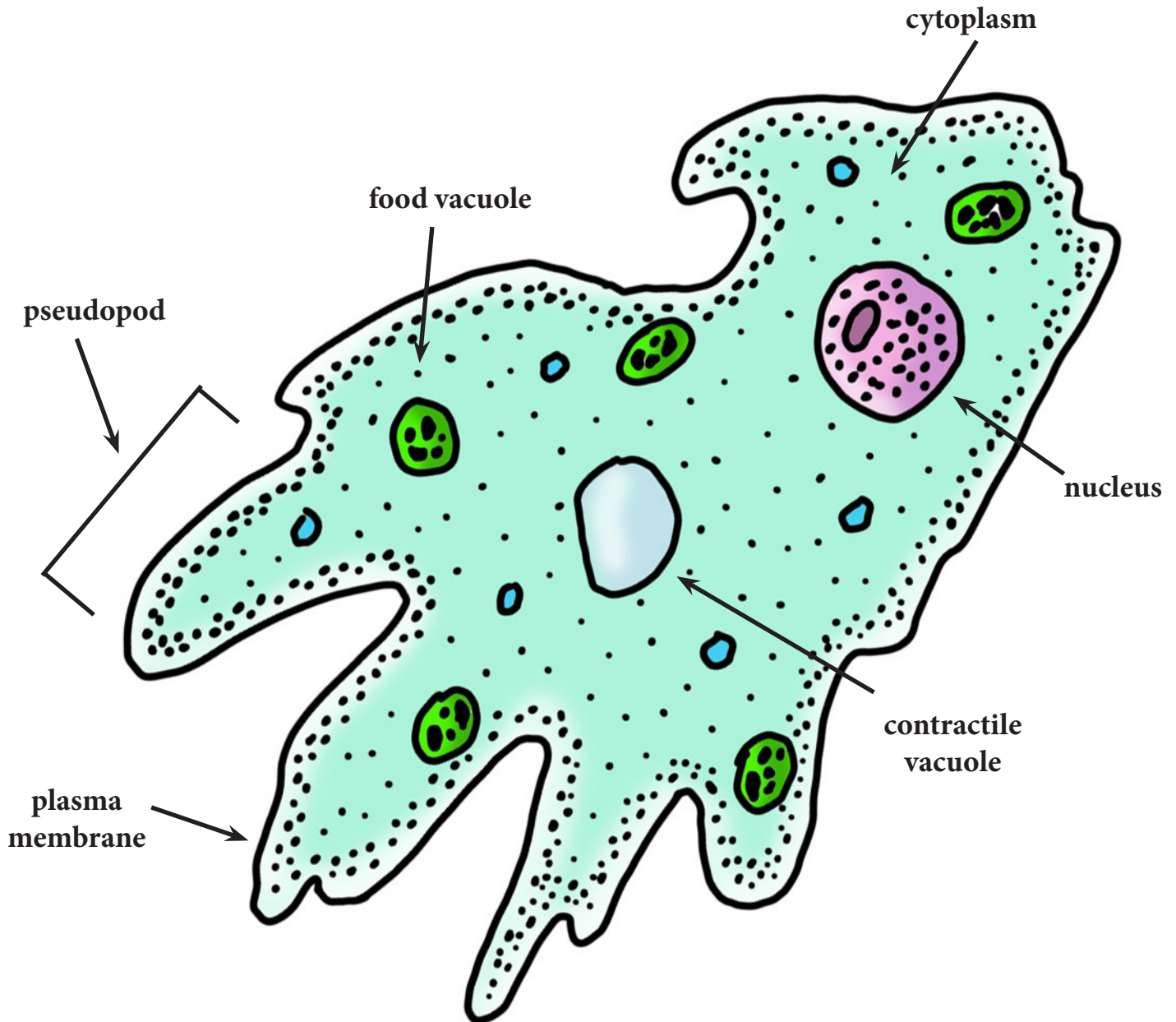


Amoeba

Amoeba are one-celled organisms that live in wet environments including ponds, wetlands, wet soil, and even human bodies. They have a movable shape and can extend pseudopods to reach for and engulf prey. They prey on smaller organisms, such as bacteria.



Amoeba

Amoeba are one-celled organisms that live in wet environments including ponds, wetlands, wet soil, and even human bodies. They have a movable shape and can extend pseudopods to reach for and engulf prey. They prey on smaller organisms, such as bacteria.

