

# Landforms and Waterways Poster Building

**ESS2.B: Plate Tectonics and Large-Scale System Interactions** - Maps show where things are located. One can map the shapes and kinds of land and water in any area.

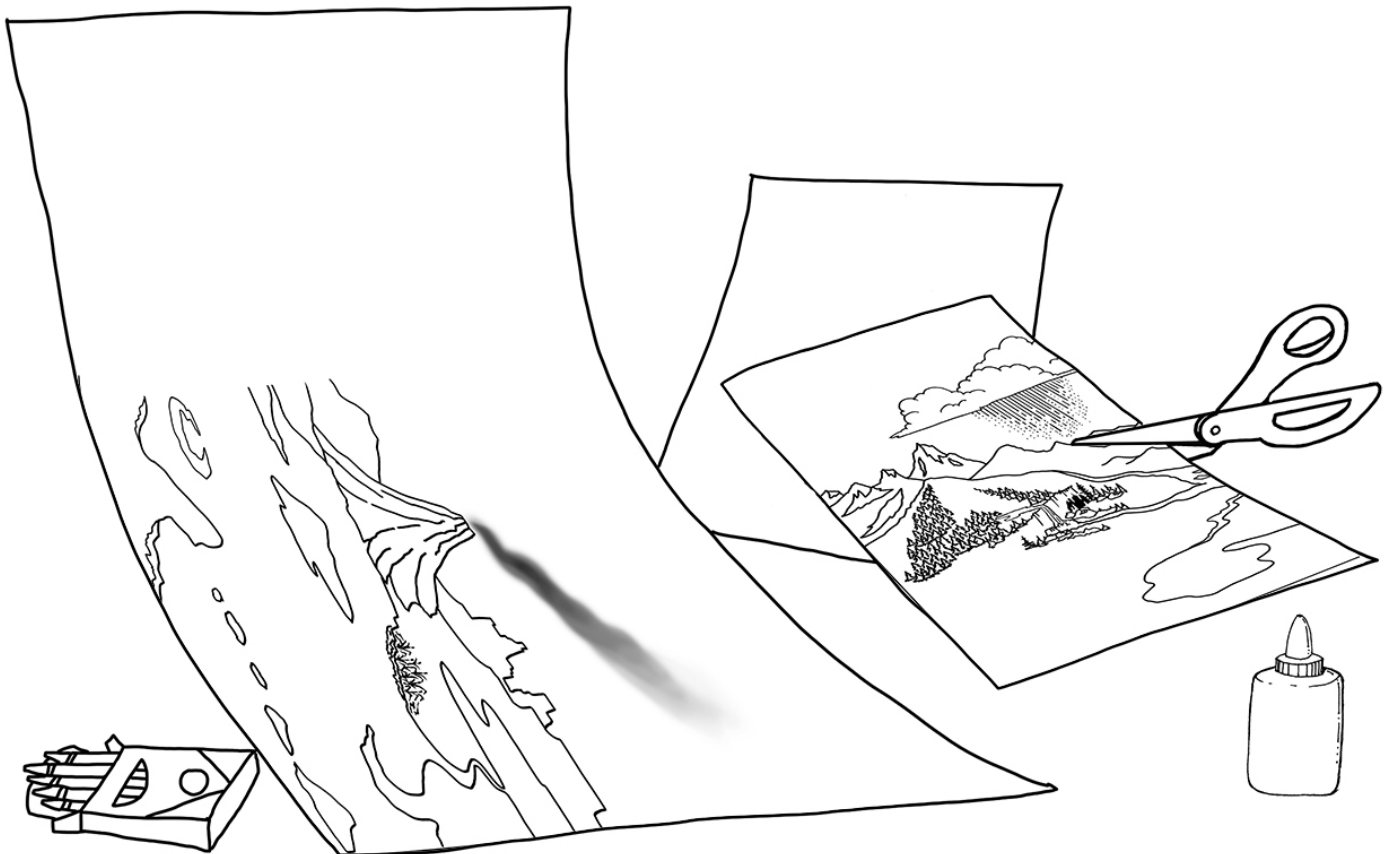
**2-ESS2-2.** Develop a model to represent the shapes and kinds of land and bodies of water in an area.

Developing and using models to understand science concepts is part of the **Science and Engineering Practices** integral to the **Next Generation Science Standards** (NGSS). *“In science, models are used to represent a system under study, to aid in the development of questions and explanations, to generate data that can be used to make predictions, and to communicate ideas to others.”*

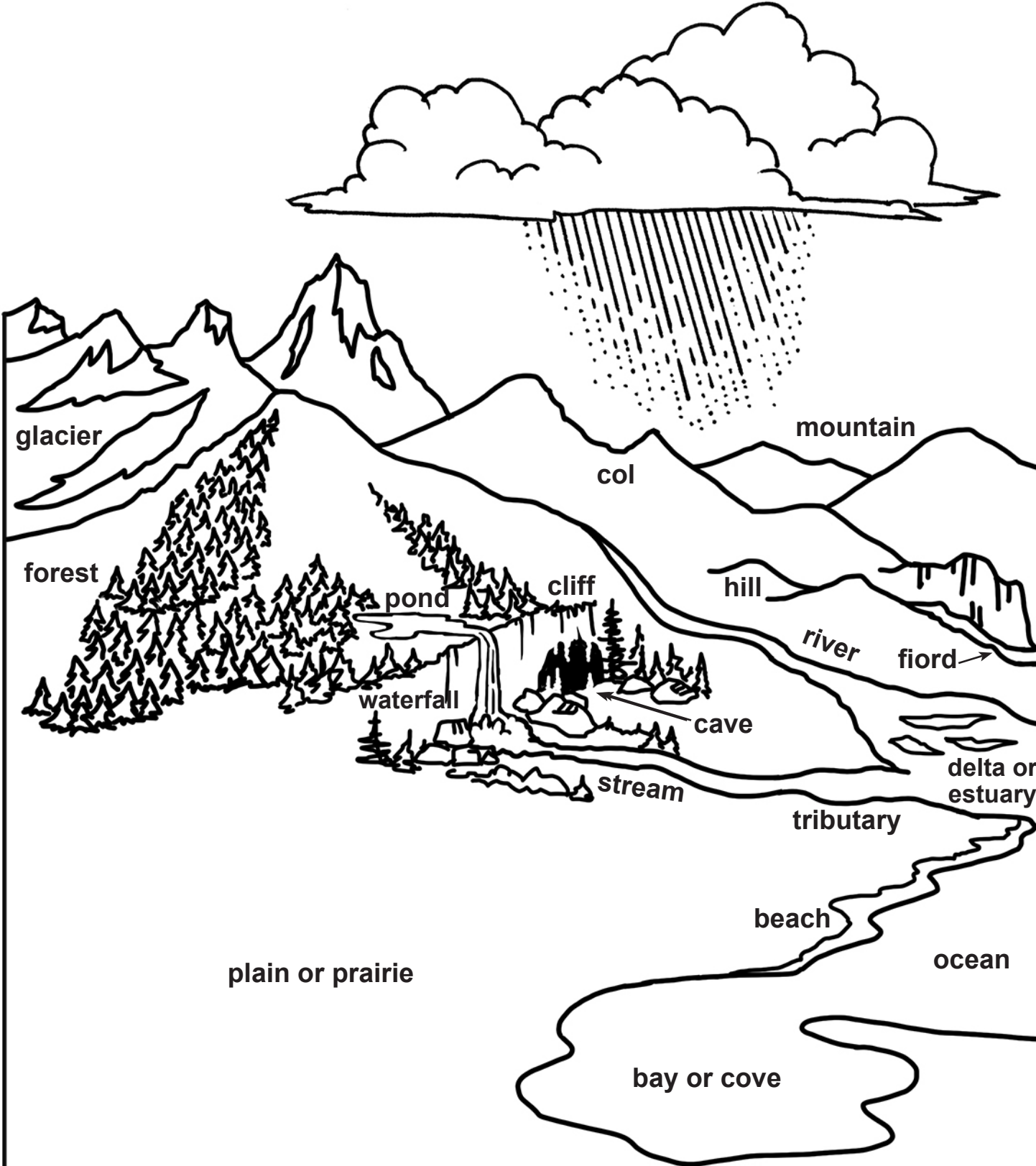
## Materials Provided:

- Two B&W Landform Sheets that can be trimmed, taped together, and colored to form 11x17” poster.
- Two color Landform Sheets that can be trimmed and taped together to form 11x17” color poster.

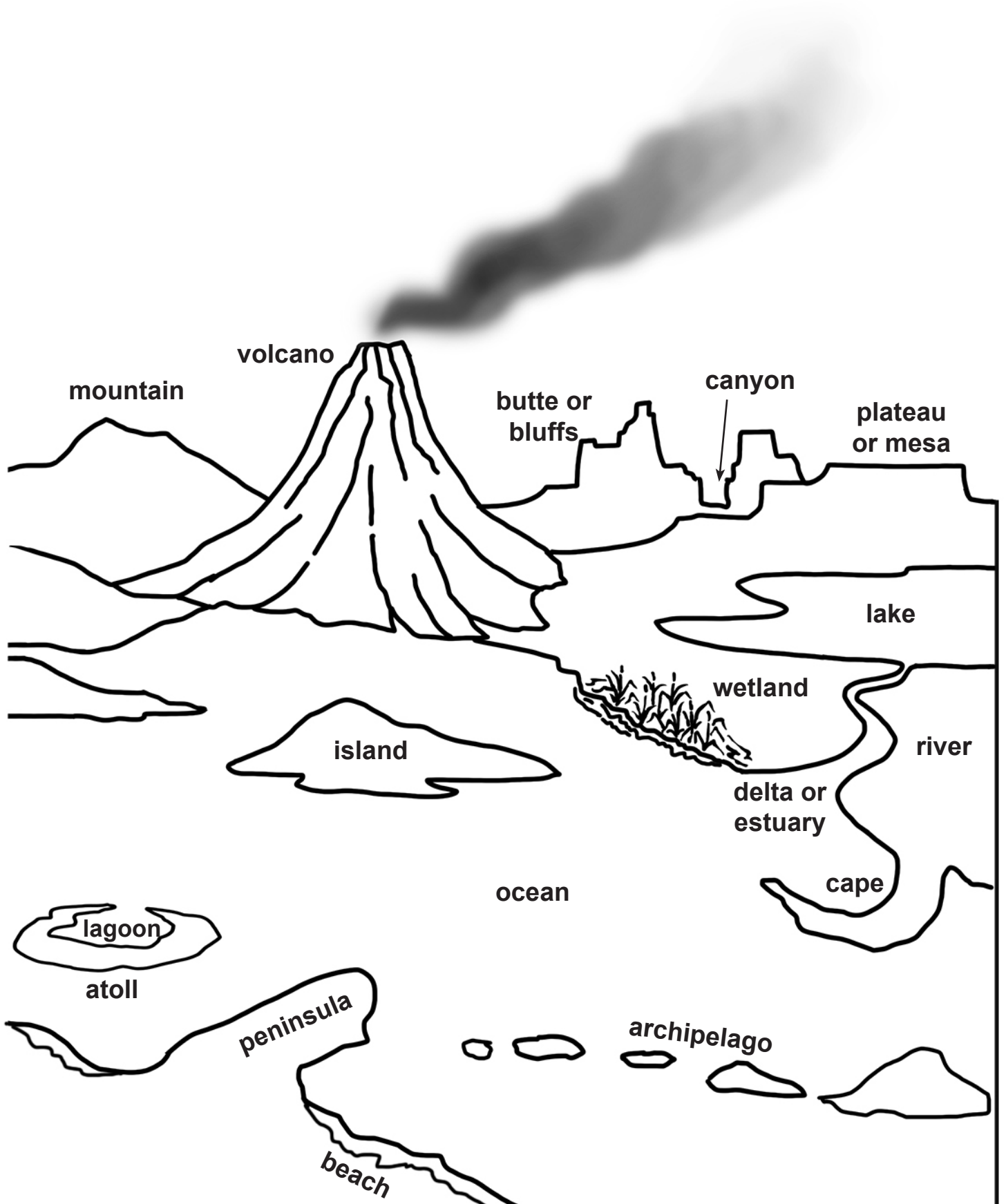
**Materials Needed:** scissors, crayons/markers, scotch tape, poster boards\* for each student (or team). \*Or to save the cost of poster board, print sheets on cover stock or card stock paper.



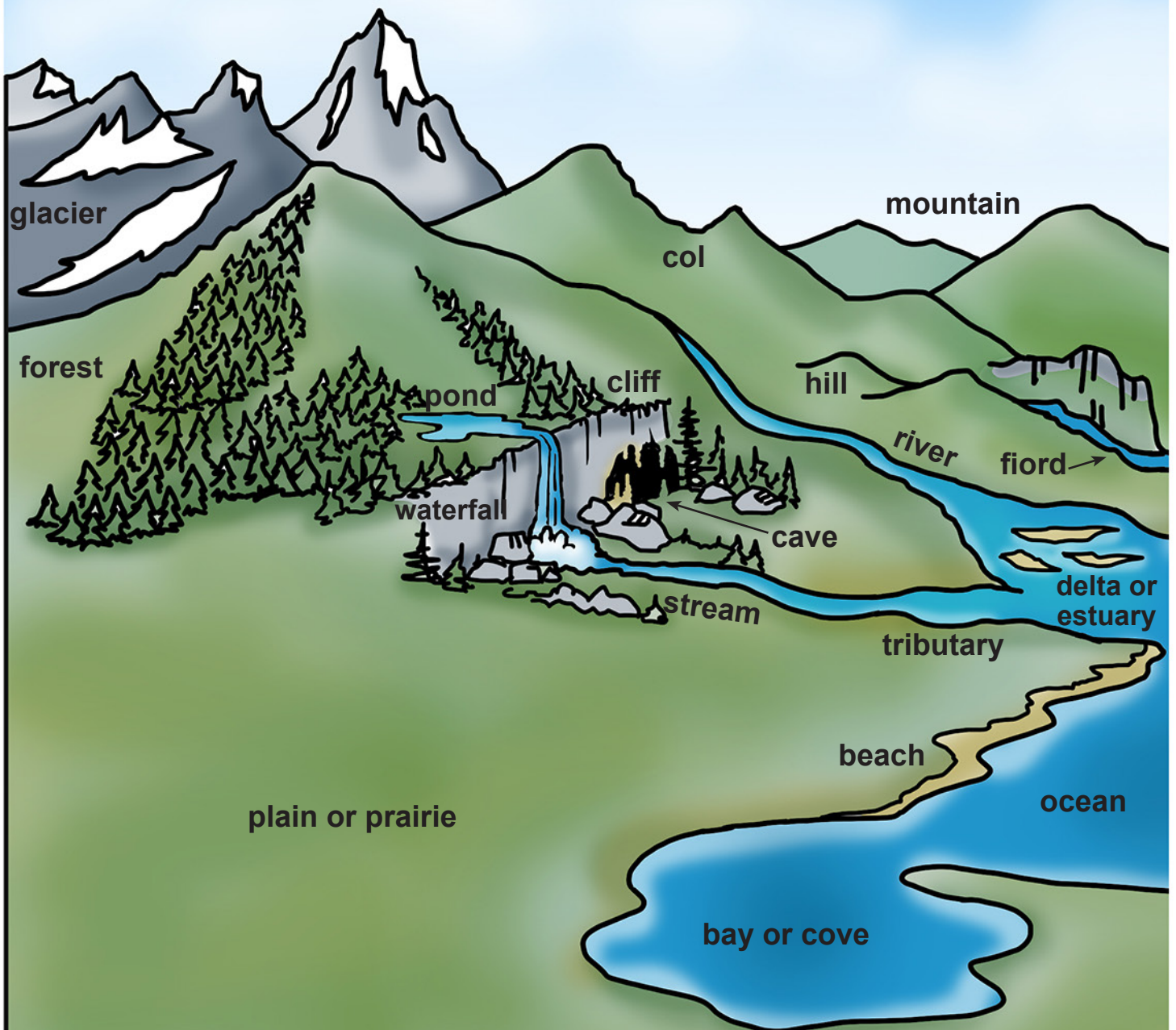
# LandForms and



# Waterways



# LandForms and





# Waterways

